

*Spring 2025*

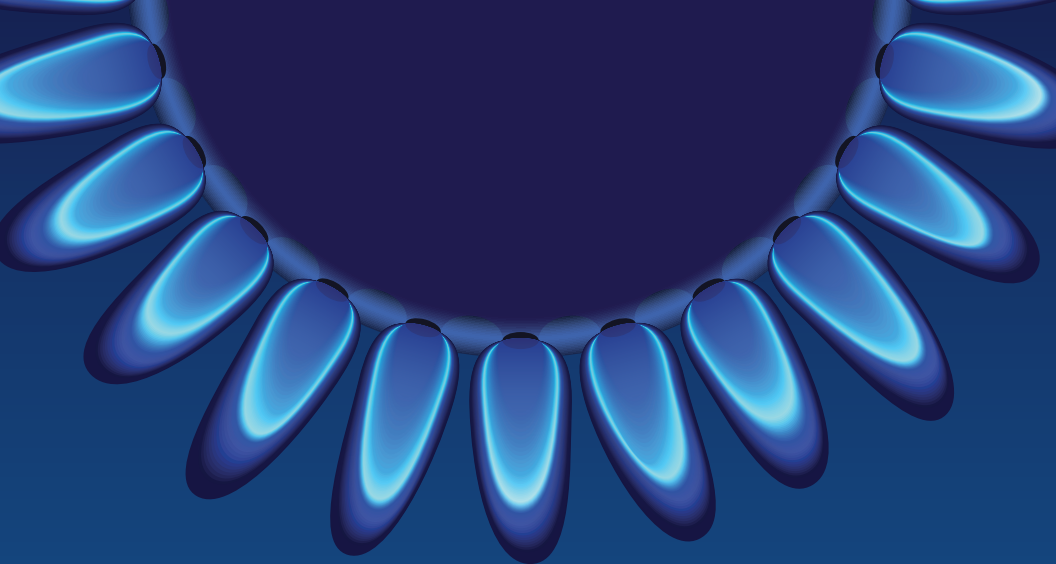
# PARADE OF HOMES

June 7, 8, 14 & 15

**WESTLAKE**  
*Tranquility At Your Doorstep*

Matt Jensen • 601-540-1123 | Scott Gideon • 601-750-5111  
[westlakems.com](http://westlakems.com)

[ParadeofHomesJackson.com](http://ParadeofHomesJackson.com) | Homes Open 1pm - 5pm



# Modern homes fueled by reliable natural gas.

---

Choosing a home with natural gas is the smart choice that saves homeowners time and money. Whether it's heating water, keeping a home warm, or cooking for family and friends, natural gas is efficient, affordable, and reliable energy for today and generations to come.

*Homeowners choose natural gas.*



[atmosenergy.com/whychoosegas](https://atmosenergy.com/whychoosegas)



R I D G E L A N D  
specialty hardware

BALDWIN

Mon-Fri: 7:30 a.m. - 5:00 p.m.

Sat: 8:30 a.m. - 1:00 p.m.

336 Old Town Crossing, Ridgeland, MS 39157

(601)-853-3294

[RidgelandSpecialtyHardware.com](http://RidgelandSpecialtyHardware.com)



# Welcome to the parade

Welcome to the Parade of Homes presented by the Home Builders Association of Jackson. Our Parade offers something for everyone. The Parade showcases new construction homes built by some of the finest builders in Madison, Rankin and Hinds Counties. You can visit **ParadeofHomesJackson.com** to preview each home in the Parade. Our goal is to help you find your new home for you and your family.

*– Chris Allen 2025 President, CA Construction*

A man wearing a dark blue shirt and a black cap, and a woman in a light-colored shirt and jeans, are standing in a modern kitchen. They are both looking at a tablet held by the man. The kitchen has white cabinets and a large window in the background.

**Quality Homes**  
BEGIN WITH  
**Quality builders.**

**FIND A  
Certified Professional Builder  
TODAY!**

MISSISSIPPI HOUSING INSTITUTE

**Start your search today @ [cpbms.com](https://cpbms.com)**



# LET YOUR WALLS BREATHE LIFE AND TRADITION

Homes made of Cherokee Brick are built on a foundation of incredible beauty and durability. Offering hundreds of brick styles, we proudly continue our tradition as a family-owned American institution spanning five generations in the South.

Before you build your dream home, check out our dream material.

*Cherokee Brick. Proudly Made in America.*



**CHEROKEE  
BRICK**  
Est. 1877

[cherokeebrick.com](http://cherokeebrick.com)

| 478.781.6800



# Meet Our Judges

Sarah Carr and Meagan Magee

Sarah Carr and Meagan Magee of Carr-Magee Interiors both graduated from Brandon High School and have a BS in Interior Design from The University of Southern Mississippi. Carr-Magee Interiors is a boutique interior design firm located in Flowood, MS where they are focused on a personal approach to interior design. Sarah and Meagan, combined, have over 25 years of experience in upscale residential design. They design homes that reflect the client's personality and how they need their home to function. They love the challenges of renovations, the freedom of a new build, and developing friendships with their clients. Carr-Magee Interiors offers a wide range of services including remodeling, new construction, commercial design, home edit, and full interior design services.

**Carr-Magee Interiors [designers@carr-mageeinteriors.com](mailto:designers@carr-mageeinteriors.com)  
601.842.7085 | 601.573.5454**



**WOLF** **SUB-ZERO** **COVE**

# Where It All Comes Together

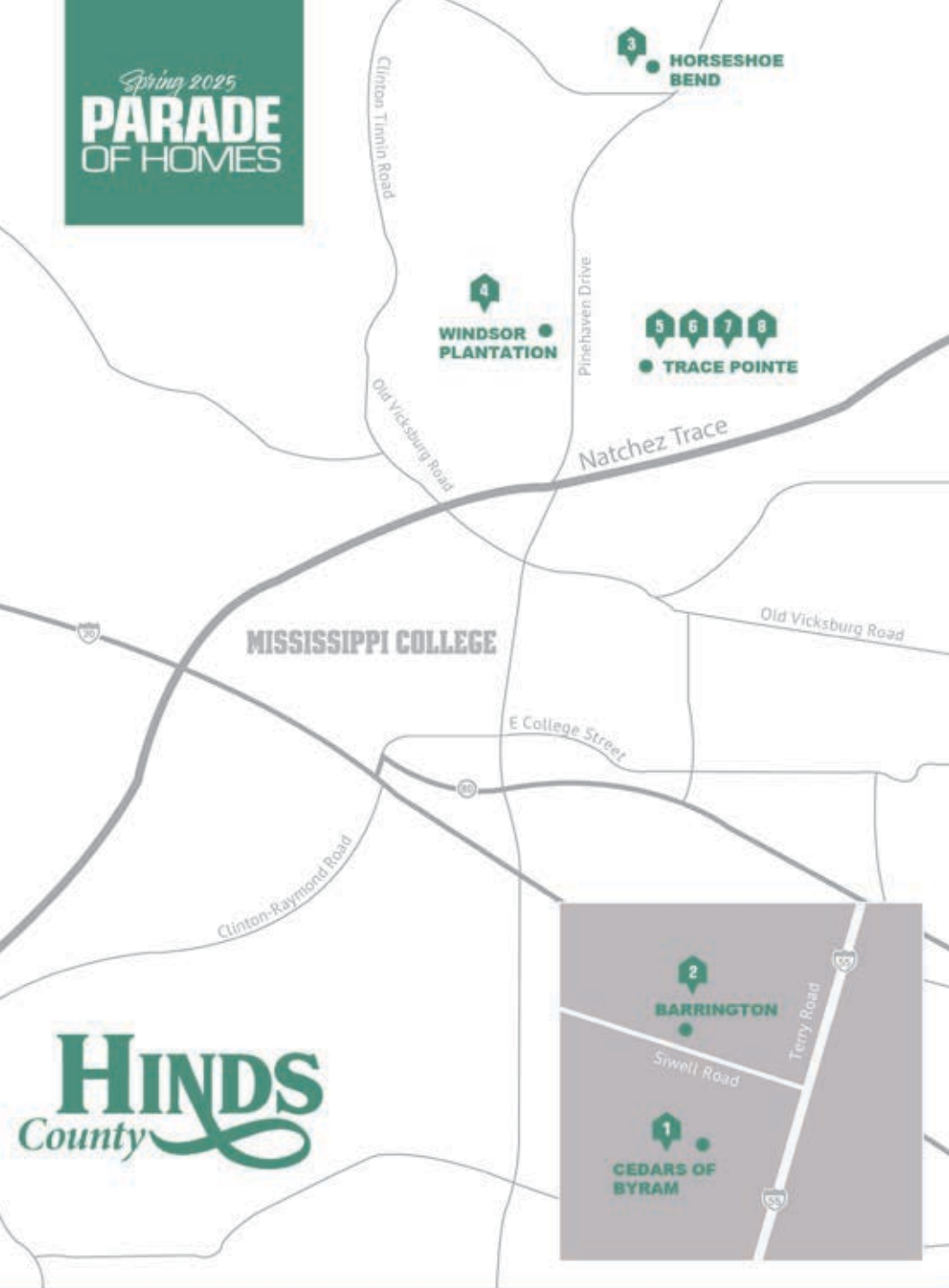
**Discover a new way to shop for your project.**

Ferguson Home has the bath, kitchen and lighting products you need to bring your vision to life. Whether you're refreshing the look of a single room or building a new home, our experts are here to help every step of the way, from product selection through delivery. Start your project or find your local showroom at [fergusonhome.com](https://fergusonhome.com).

JACKSON

©2025 Ferguson Enterprises, LLC 0525 8019408

Spring 2025  
**PARADE  
OF HOMES**



Once you arrive at a development look for the Parade of Homes directional signs to guide you through the development. All Parade homes will be designated by an official Parade sign.



1

## 304 BRANNAN AVENUE CEDARS AT BYRAM ESTATES



### D.R. HORTON, INC.

(601) 440-2663

- 1,885 sf, 4 br / 2 ba, MODEL HOME
- Spacious open concept plan
- Granite countertops
- Stainless steel appliances
- "Home is Connected" Smart Home packages
- D.R. Horton, Inc., (601) 440-2663
- \$294,700



2

## 205 RAULSTON DRIVE BARRINGTON



### D.R. HORTON, INC.

(601) 440-2663

- 1,915 sf, 4 br / 2 ba, MODEL HOME
- Spacious open concept plan
- Granite countertops
- Stainless steel appliances
- "Home is Connected" Smart Home packages
- D.R. Horton, Inc., (601) 440-2663
- \$319,000



## 107 HORSESHOE BEND

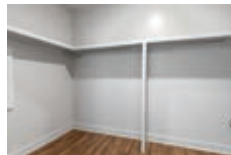
### HORSESHOE BEND



### D.R. HORTON, INC.

(601) 440-2663

- 2,306 sf, 4 br / 2.5 ba, MODEL HOME
- Spacious open concept plan
- Trey ceilings
- Granite countertops
- Stainless steel appliances
- "Home is Connected" Smart Home packages
- D.R. Horton, Inc., (601) 440-2663
- \$374,900



## 112 CATHERINE BOULEVARD

### WINDSOR PLANTATION



### KIRKLAND DEVELOPMENT

Bruce Kirkland, CPB, & Chip Hutchison, CPB, (601) 982-7381

- 2,077 sf, 4 br / 3 ba, split plan, gated community
- Spacious living area w / brick-front gas log fireplace
- Covered back porch, open to dining area
- Kitchen w / stainless appliances, wall oven
- Quartz counters, custom cabinets, walk in pantry
- Leah Sandidge, Godfrey Realty Group, LLC, (601) 540-6086
- \$411,000

## 105 TRACE POINTE PLACE

### TRACE POINTE



### KIRKLAND DEVELOPMENT

Bruce Kirkland, CPB, & Chip Hutchison, CPB, (601) 982-7381

- 1,940 sf, 4 br / 3 ba, open plan
- Large, covered back porch wired for TV
- Hall bath has 2 vanities
- Multi-use trails lead to Clinton Schools & Traceway Park
- Lee Irwin, Godfrey Realty Group, (601) 259-5544, (601) 326-3333
- \$384,000

6

## 107 TRACE POINT PLACE TRACE POINTE



### KIRKLAND DEVELOPMENT

Bruce Kirkland, CPB, & Chip Hutchison, CPB, (601) 982-7381

- 2,019 sf, 3 br / 3 ba, gated community
- Spacious living area, brick-front gas log fireplace
- Covered back porch, plus open to dining
- Gorgeous kitchen w / stainless appliances, wall oven
- Quartz counters, plenty of cabinets, walk in pantry
- Leah Sandidge, Godfrey Realty Group, (601) 540-6086
- \$399,000

7

## 116 TRACE POINT PLACE TRACE POINTE



### KIRKLAND DEVELOPMENT

Bruce Kirkland, CPB, & Chip Hutchison, CPB, (601) 982-7381

- 2,033 sf, 3 br / 3 ba, front yard irrigation system
- Kitchen w / huge window, walk-in pantry
- Stainless appliances, quartz counters
- Living area w / brick, gas log fireplace
- Large, back porch w / pine ceiling
- Multi-use trails lead to Clinton Schools & Traceway Park
- Lee Irwin, Godfrey Realty Group, (601) 259-5544, (601) 326-3333
- \$399,900

8

## 118 TRACE POINT PLACE TRACE POINTE



### KIRKLAND DEVELOPMENT

Bruce Kirkland, CPB, & Chip Hutchison, CPB, (601) 982-7381

- 2,010 sf, 4 br / 3 ba, open floor plan, neutral colors
- High ceilings, living room w / fireplace
- Large windows
- Open kitchen, stainless steel appliances
- 5 burner stove, microwave, dishwasher, oven
- Security system, covered patio
- Nita Durrell, Durrell Realty Group, LLC, (601) 540-7959
- \$391,950

**Don't stop  
thinking about  
tomorrow.**



As one of the South's strongest and most respected financial institutions, Trustmark offers a comprehensive range of products and services for all of your personal and business needs. Learn more at [trustmark.com](http://trustmark.com).

Checking • Savings • Loans  
Wealth Management\*



\*Wealth Management products are:  
Not FDIC Insured | Not Bank Guaranteed | Subject to Loss in Value  
Not Bank Deposits | Not Insured by any Federal Government Agency





**CANTON RICHLAND**

**CANTON: 601-407-1484**  
**RICHLAND: 601-932-0284**

---

**84LUMBER.COM**



## ALLISON IMPASTATO

VP | Residential Construction Manager  
o. 601.414.2102 c. 601.540.2154 NMLS - 655406



No matter what stage of  
home ownership you are in...

 **PriorityOne**<sup>™</sup>  
Construction Loans  
Home Equity Lines of Credit  
Home Equity Loans  
Mortgages

**can help**



[www.PriorityOneBank.com](http://www.PriorityOneBank.com)



**CA CONSTRUCTION**

**601.497.4147**

[www.caconstructionms.com](http://www.caconstructionms.com)

Additions | New Construction | Outdoor Kitchens | LIC# 17479

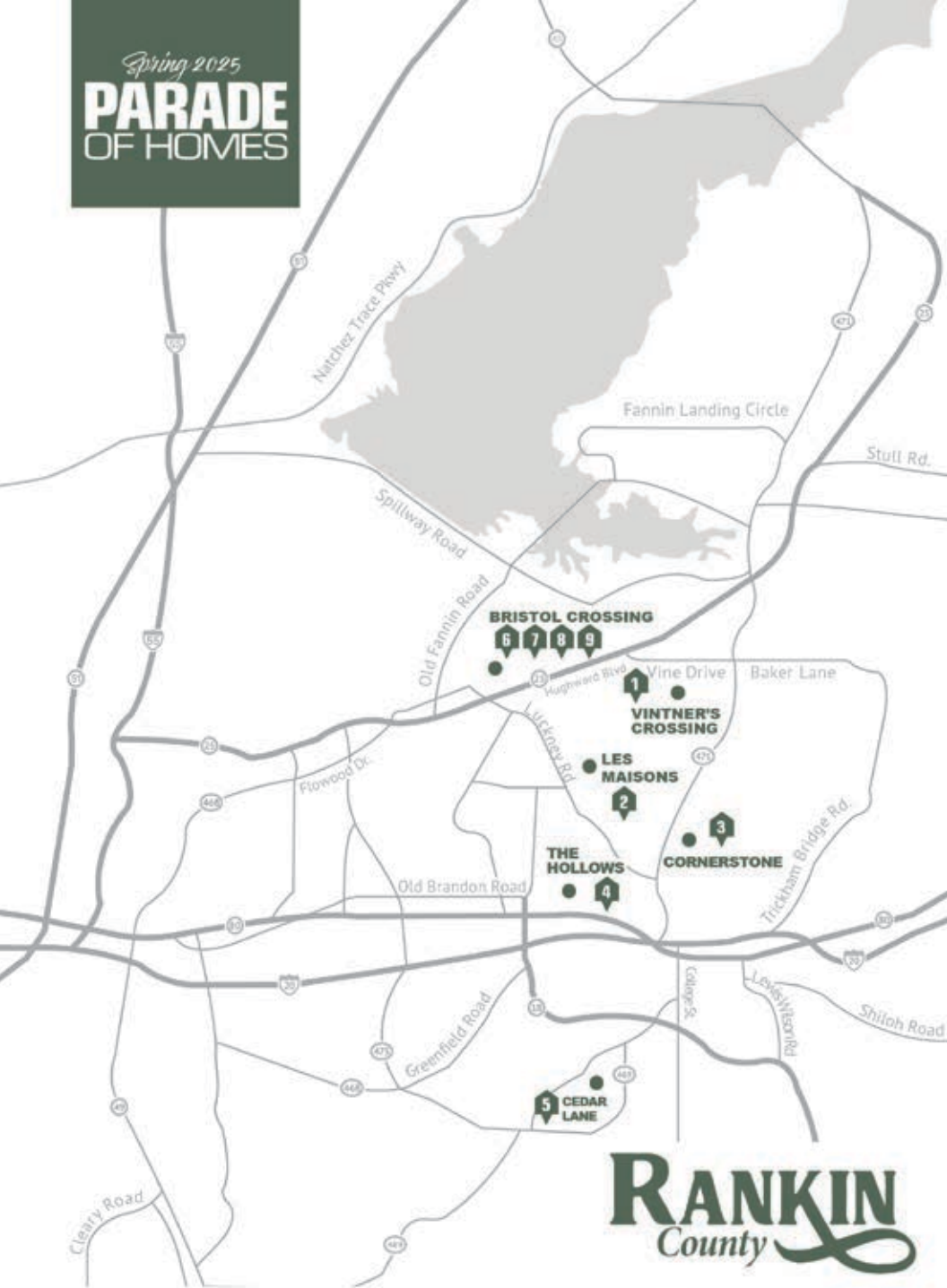
**LET US TURN YOUR HOUSE INTO  
THE HOME OF YOUR DREAMS**



**OLD SOUTH**  
**Brick & Supply Co.**  
A Mississippi Family Company Since 1982  
**Specializing in Rare Old Brick  
& Brick Matching**  
*Brick  
Architectural Block  
Natural & Cultured Stone  
Indoor/ Outdoor Fireplace*

**601-366-8463**  
[www.OldSouthBrickandSupply.com](http://www.OldSouthBrickandSupply.com)

Spring 2025  
**PARADE  
OF HOMES**



Once you arrive at a development look for the Parade of Homes directional signs to guide you through the development. All Parade homes will be designated by an official Parade sign.

1

### 347 OAKVILLE CIRCLE VINTNERS CROSSING



#### SILVER CREEK CONSTRUCTION, LLC

Kevin Lofton • (601) 540-6712

- 2,004 sf, 3 br / 3 ba, fenced backyard, landscaped yard
- Front porch, huge covered back patio, rear porch
- Free standing tub, walk-in shower
- Ride your golf cart to Castlewoods
- Mandy Castle, Castle Real Estate, (601) 720-0843
- \$399,900

2

### 619 BIG VALLEY LOOP LES MAISONS



#### SOUTHERN HERITAGE CONSTRUCTION

DeFord Walker • (601) 941-1080

- 2,752 sf, 4 br / 4 ba, convenient Flowood neighborhood
- Showpiece kitchen, generous size island
- Top of the line appliances, built in refrigerator
- Side entry garage fits 3 vehicles
- Covered back porch w / wood burning fireplace
- Grilling area / outdoor kitchen
- Victoria Prowant, Southern Homes Real Estate, (601) 750-7151

3

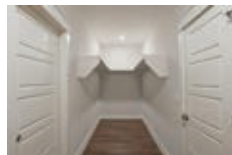
### 123 CORNERSTONE DRIVE CORNERSTONE



#### D.R. HORTON, INC.

(601) 440-2663

- 2,997 sf, 4 br / 3 ba, MODEL HOME
- Spacious open concept plan
- Gas fireplaces, quartz countertops
- Stainless steel appliances
- "Home is Connected" Smart Home packages
- D.R. Horton, Inc., (601) 440-2663
- \$462,000





4

## 453 PINEY DRIVE THE HOLLOW



### D.R. HORTON, INC.

(601) 440-2663

- 1,835 sf, 4 br / 2 ba, MODEL HOME
- Spacious open concept plan
- Trey ceilings
- Granite countertops
- Stainless steel appliances
- "Home is Connected" Smart Home packages
- D.R. Horton, Inc., (601) 440-2663
- \$334,000



5

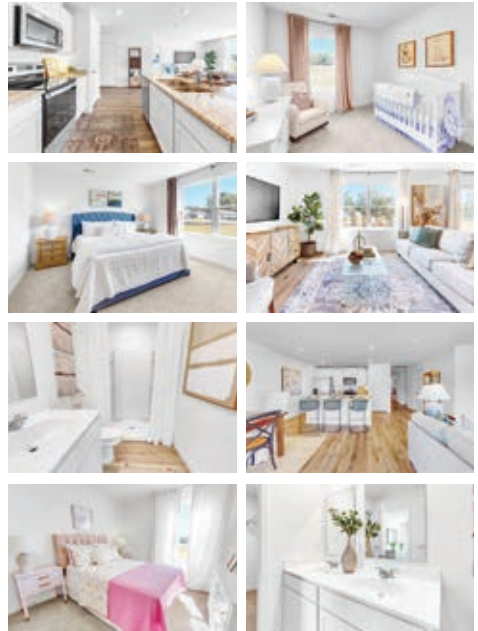
## 115 CEDAR RIDGE BOULEVARD CEDAR LANE



### D.R. HORTON, INC.

(601) 440-2663

- 1,318 sf, 3 br / 2 ba, MODEL HOME
- Spacious open concept plan
- Granite countertops
- Stainless steel appliances
- "Home is Connected" Smart Home packages
- D.R. Horton, Inc., (601) 440-2663
- \$234,900





**6****129 BRONSON BEND  
BRISTOL CROSSING****DESTINATION HOMES**

Chris Bond, CPB • (601) 672-7582  
Nathan Holditch • (601) 624-3129

- 2,030 sf, 4 br / 2.5 ba, convenient neighborhood
- Large kitchen
- Great backyard
- Builder / Agent
- \$399,900

**7****227 BRONSON BEND  
BRISTOL CROSSING****MS HOMES**

Nick Gullette • (601) 506-2502

- 2,049 sf, 4 br / 3 ba, convenient location
- Open concept floor plan
- Large windows throughout
- Fireplace, tankless water heater
- Custom cabinetry, large island, walk in pantry
- Covered outdoor living space w / fireplace
- Tye Densford, Trifecta Real Estate, (601) 672-4001
- \$405,000

**8****231 BRONSON BEND  
BRISTOL CROSSING****ZATTONI BUILDERS**

Devon Zattoni • (601) 613-6678

- 2,640 sf, 4 br / 3 ba, fenced in backyard, 2 story home
- Electric fireplace in living room
- Gas log fireplace on covered patio
- Quartz counters, 6 burner gas stove
- Locker / mud area, large laundry room w / sink
- Entire lawn has irrigation system including beds
- Security system with camera doorbell
- Cindy Smith, Maselle & Associates, Inc., (601) 540-1726
- \$517,000

**9****243 BRONSON BEND  
BRISTOL CROSSING****DESTINATION HOMES**

Chris Bond, CPB • (601) 672-7582  
Nathan Holditch • (601) 624-3129

- 2,155 sf, 4 br / 3 ba, convenient neighborhood
- Luxury vinyl floors, stainless appliances
- Large pantry, office, mud bench
- Master bath leads through closet to laundry
- Elizabeth R. Smith, Nix-Tann & Associates, Inc., (601) 506-4608
- \$424,500

## YOUR TRUSTED GENERATOR PROVIDER

GENERATOR SALES AND SERVICE • INSTALLATION • ELECTRICAL SERVICES • FAST, AFFORDABLE AND FRIENDLY SERVICE



Plan ahead for an extended power outage with a Generac or Kohler Home Standby Generator. Keep everything that matters to you protected and powered up.



# MISSISSIPPI ENERGY SERVICES

601.878.8020 • [msenergy.us](http://msenergy.us) • Terry, MS



# Commercial Loans

THAT ARE CUSTOM BUILT

© Copyright 2021 BankPlus.  
Member FDIC



The BankPlus Commercial Lending team takes pride in our unique ability to deliver the best expertise and customer service possible. We provide more than business financing; we help your business become more efficient. From loans and lines of credit to checking and cash management, our team delivers customized products and services for you – so you can do what you do even better. Learn more at [bankplus.net](http://bankplus.net)

## BankPlus

# Make the **SmartChoice** with Natural Gas.



**With rebates up to \$600**, high-efficiency natural gas appliances are a smart choice for fueling our energy future.

<b>Natural Gas Appliance</b> (Efficiency qualifications apply)	<b>Rebate Amount</b>
High-Efficiency Furnace	Up to \$600
Tankless Water Heater	Up to \$350
Tank Water Heater	\$100
Clothes Dryer	\$100
Smart Thermostat	\$100

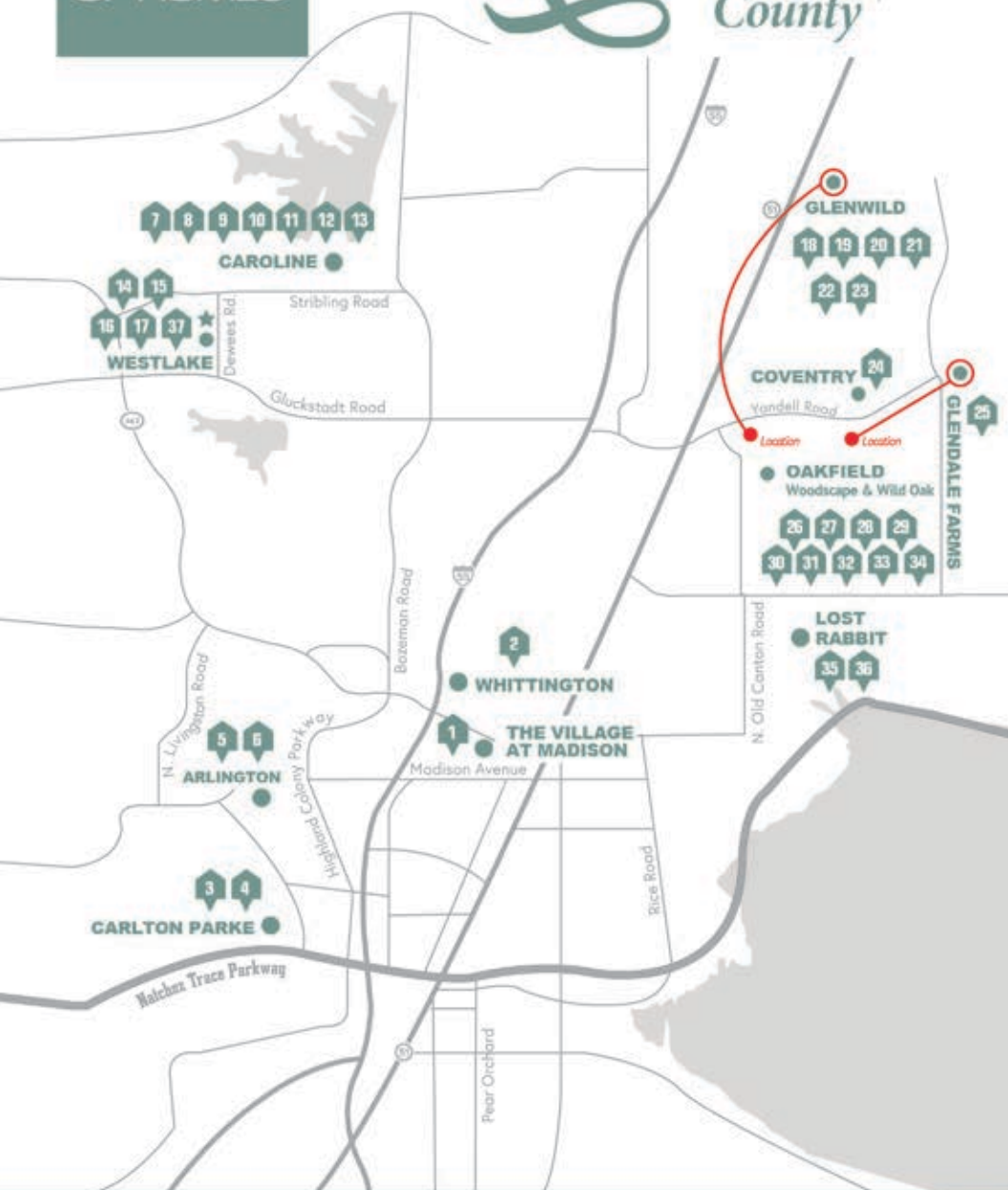
Atmos Energy is committed to providing solutions to help our Mississippi customers save money, conserve energy, and lower carbon emissions.

Visit [AtmosEnergy.com/MSrebates](https://AtmosEnergy.com/MSrebates)  
or call 877.616.6276



Spring 2025  
**PARADE  
OF HOMES**

# MADISON County



Once you arrive at a development look for the Parade of Homes directional signs to guide you through the development. All Parade homes will be designated by an official Parade sign.



1

## 311 FELICITY STREET VILLAGE AT MADISON



### MANNING & MANNING CONSTRUCTION

John Manning • (601) 500-1601

- 2,864 sf, 3 br / 3 ba, balcony w / iron railing
- Viking appliances, huge island in kitchen
- Covered side porch, 11 ft. ceilings
- Quartz countertops, wet bar w / ice maker
- Jessie Haley, Haley Properties, (601) 559-5354
- John Manning, Haley Properties, (601) 910-9010
- \$850,000



2

## 425 WHITTINGTON CIRCLE WHITTINGTON



### MANDY GARDNER HOMES

Mandy Gardner • (601) 946-4941

- 3,660 sf, 5 br / 4 ba, gated neighborhood w / pool & clubhouse
- Engineered hardwood floors throughout / tile in baths
- Kitchen w / oak venthood, island
- Keeping area w / wet bar, quartz counters
- Downstairs office, upstairs children's study & den
- Covered front & back porches
- Outdoor kitchen w / 2nd fireplace
- Two walk-in attics, 3 car garage
- Owner / Agent
- \$899,900

3

## 225 PARKE DRIVE CARLTON PARKE



### LAKESHORE HOMES

Hillary Reese • (601) 291-9285

- 3,680 sf, 5 br / 6 ba, designer selected finishes
- Massive windows, fireplace, gourmet kitchen
- Keeping area w / its own fireplace
- Formal foyer, wet bar, powder room
- Upstairs finished bonus room / bedroom & full bath
- Primary suite w / window nook, 2 water rooms
- Amazing primary bedroom custom closet
- 3 bedrooms with ensuite bathrooms
- Pamela McGehee, The Chandler Group, (601) 954-2223
- \$965,000



We are a truly custom, small-volume homebuilder. Our focus is on unique, high-end, single family homes. While an IKON Home may cost a bit more than production and semi-custom built homes, you will feel the difference.

*C.H. & Company*  
REAL ESTATE, INCORPORATED

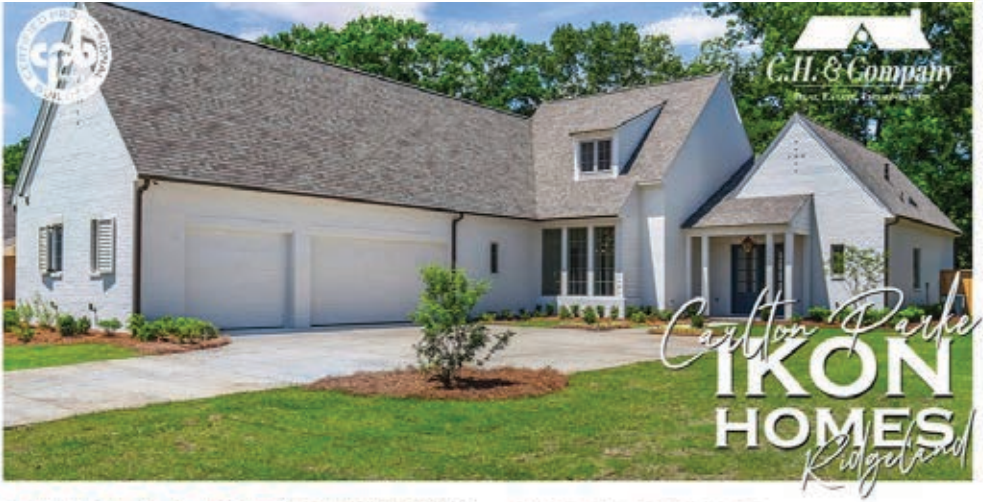


**IKON  
HOMES**

Cathy Harkins, Broker/Owner  
C.H. & Company Real Estate, Inc.  
601.982.4000 (o) | 601.966.4009 (m)  
chandcompany.net  
harkinscathy@aol.com

Locke Ward, REALTOR®  
C.H. & Company Real Estate, Inc.  
601.982.4000 (o) | 601.906.5577 (m)  
chandcompany.net  
lockeward@bellsouth.net





## SUPERIOR DESIGN

### UNMATCHED ATTENTION TO DETAIL™

We put everything we have into our builds... this traditionally inspired, truly custom built home was designed start to finish with the vision everything should just makes sense. We love its traditional details that perfectly blend with architecture through purposeful design - abundance of light, oversized windows and cabinetry, herringbone and chevron crafted floors, granite walls and fireplaces, spacious vaulted ceilings inside and out, and its many carefully created destination spaces.

## IKON HOMES

Joel Harris | Builder, CPB | M.S. B.S. Engineering

- 3,572 sf, 4 br / 4.5 ba, 3 car garage
- Semi-open concept, split plan with two beds up
- Abundance of windows and natural light
- Formal dining, foyer and keeping spaces
- Pantries, butler's pantry, and drop zone
- Large primary bath with his and hers closets
- Offered by Cathy Harkins of C.H. & Company
- 3 bedrooms with ensuite bathrooms
- \$938,900



5

## 102 COMMONWEALTH DRIVE ARLINGTON



### BLOOM CONSTRUCTION

Johnathan Decker • (601) 521-7850

- Best location in Jackson Metro - Madison schools & Ridgeland shopping nearby!
- New Orleans-style home with 4 br / 3.5 ba, wrap around porch, downstairs master w / marble en-suite & large laundry
- Upstairs: 3 br, 2ba + office / study / sitting area
- Custom kitchen w / marble island, quartz counters, Thermador appliances, window seat, & coffee bar
- High-end finishes: brick fireplace, white oak floors, high ceilings, Emtek hardware, Visual Comfort lighting, custom closets, frameless glass showers, iron railings & more!
- Must see in person!
- Judson Wright, Wright & Company, (601) 688-9844
- \$944,000

6

## 104 COMMONWEALTH DRIVE ARLINGTON



### BLOOM CONSTRUCTION

Johnathan Decker • (601) 521-7850

- Best location in Jackson Metro - Madison schools & Ridgeland shopping nearby!
- New Orleans-style 3 br / 3.5 ba home with 2 br / 2.5 ba on main floor and upstairs suite + large flex space perfect for 2nd den, studio, or office
- Gorgeous custom kitchen w / mahogany island, quartz counters, and Monogram appliances
- Luxury finishes throughout: white oak floors, high ceilings, Emtek hardware, Visual Comfort lighting, custom closets, tile showers, and more!
- Jenny Decker, TM Realtors, (601) 871-7653
- \$845,500

7

## 122 LAKECREST DRIVE PINEHURST OF CAROLINE



### TIMBERCREST HOMES, LLC

Todd Seymour • (601) 720-8719

- 1,997 sf, 3 br / 2 ba, neighborhood amenities
- Open kitchen, dining, family room
- All solid surface flooring, no carpet
- Walk-in pantry, large island, fireplace
- Primary suite w / large walk-in closet, built-ins
- Covered back patio w / fireplace
- Amanda Polles, Polles Properties, (601) 898-3364
- \$405,000

8

## 109 LAKECREST DRIVE PINEHURST OF LAKE CAROLINE



### MURRAY HOME BUILDERS

Brett Murray • (601) 906-5626

- 1,840 sf, 3 br / 2 ba, wood floors throughout, cul-de-sac
- Large kitchen w / island, quartz countertops
- 5 burner gas stove, custom cabinets, pullout spice rack
- Walk-in pantry, sink in laundry, laundry room opens to master bath
- Gas log fireplace in living w / built-ins
- His and Hers separate walk-in closets
- Private backyard, full wood privacy fence, large patio, tv connection, extra parking pad
- Julie McNeely, Julie McNeely Properties, (601) 503-4924
- \$374,900



9

**201 LAKECREST DRIVE**  
PINEHURST OF LAKE CAROLINE



## PORTICO HOMES

Jon Mark Jordan • (601) 853-4663

- 1,895 sf, 3 br / 2 ba, open floor plan
- Spacious kitchen open to living & keeping
- Lockers, walk in pantry, office
- Storage room & covered porch
- Outdoor fireplace wired for tv
- Fully landscaped
- Builder / Agent, (601) 853-4663
- \$389,000

10

**122 GRAYSON WAY**  
BELLEMEADE OF LAKE CAROLINE



## WILLIAM WHITE RESIDENTIAL CONSTRUCTION

William White • (601) 389-2999

- 2,362 sf, 4 br / 3 ba, no back door neighbors
- Open floor plan
- Large closets, walk in pantry
- Drop zone, laundry room
- Wood floors throughout
- Large back porch with gas logs
- William White, White Realty Company, (601) 416-6999
- \$479,500



**SMART MADE SIMPLE**



Building?



Renovating?



Moving?



Security + Alarms



Lighting



Surround Sound



Move-In



TV's + Mounting



Network + WiFi

Mississippi Smart Homes is your one-stop shop for IT, proudly serving Mississippi with guaranteed quotes and same-day service. We take pride in our work, ensuring it's reliable and easy to use. Give us a call today!



Contact Us  
601-749-1843  
[www.mssmarthomes.com](http://www.mssmarthomes.com)

Visit Our Showroom  
200 W Hamilton Street  
Ridgeland, MS 39157



11

**103 CHARLESTON COVE**  
 KATHERINE LAKE OF LAKE CAROLINE

**TAILORED SOUTH HOMES**

John Michael Rainey, CPB • (601) 613-5242

- 3,141 sf, 4 br / 4 ba, cul de sac, open plan
- Windows overlooking Katherine Lake
- Primary bedroom overlooks lake
- Large kitchen w / gas cooktop, wall oven, ice maker
- Stainless appliances, storage, walk in pantry
- Laundry w / storage & sink
- Outdoor covered patio overlooking lake
- Walking distance to neighborhood pool
- Jessie Haley, Haley Properties, LLC, (601) 559-5354
- \$779,000

12

**184 HARBOR VIEW DRIVE**  
 THE SHORES OF LAKE CAROLINE

**NOBLE PROPERTIES**

Arthur Noble • (601) 953-6987

- 3,120 sf, 4 br / 3.5 ba, open floor plan, white oak flooring
- Large windows in kitchen & living space
- Brick fireplace w / gas logs
- Unfinished 5th bedroom and bath
- Eat-at island, farmhouse sink, quartz counters
- Upscale stainless appliance package
- Primary bedroom suite w / freestanding tub, walk in shower
- Frameless glass enclosure, private water closet
- Stephanie Remore, Keller Williams, (601) 955-7176
- \$780,000

13

**117 CHARLESTON LANE**  
 KATHERINE LAKE AT LAKE CAROLINE

**WILLIAM WHITE RESIDENTIAL CONSTRUCTION**

William White • (601) 389-2999

- 2,014 sf, 3 br / 3 ba, 250 yards to Whispering Pines pool
- Guest bedrooms with jack and jill bathrooms
- Kitchen has quartz counters, custom vent hood
- Large kitchen island, walk in pantry
- Powder room off kitchen, drop zone off garage entry
- William White, White Realty Company, (601) 416-6999
- \$412,900

14

**164 WESTLAKE CIRCLE**  
 WESTLAKE

**PORTICO HOMES**

Jon Mark Jordan • (601) 853-4663

- 3,820 sf, 4 br / 4 ba, prime lake views
- Formal dining / eating, keeping, living
- Flex room near primary room
- Walk in pantry, lockers, mudroom, wet bar
- Spacious covered outdoor living space
- Outdoor wood burning fireplace & grilling station
- Fully irrigated & landscaped
- Builder / Agent, (601) 853-4663
- \$949,000

15

**178 WESTLAKE CIRCLE**  
WESTLAKE**NOBLE PROPERTIES**

Arthur Noble • (601) 953-6987

- 3,540 sf, 4 br / 3.5 ba, open floor plan, irrigation system
- Custom woodwork, butler's pantry
- Fireplace in living w / vaulted ceiling
- Kitchen / keeping w / fireplace, island
- Primary suite w / garden tub, walk in closet, tile shower
- Gas cooktop, amazing pantry, tons of cabinets
- Office w / built-ins, 3 car garage w / lockers, storage
- Stephanie Remore, Keller Williams, (601) 955-7176
- \$940,000

16

**197 WESTLAKE CIRCLE**  
WESTLAKE**NOBLE PROPERTIES**

Arthur Noble • (601) 953-6987

- 3,539 sf, 4 br / 3 ba, open floor plan, lake view
- Perfect home for entertaining
- Formal dining w / custom woodwork & butler's pantry
- Fireplace in living w / vaulted ceiling
- Kitchen/keeping w / fireplace, island
- Stainless appliances, double wall ovens
- Gas cooktop, amazing pantry, tons of cabinets
- Office w / built-ins, 3 car garage w / lockers, storage
- Stephanie Remore, Keller Williams, (601) 955-7176
- \$867,000

17

**308 LOIS COURT**  
WESTLAKE**WISEMAN HOME BUILDERS**

Chris Wiseman • (601) 502-5168

- 3,950 sf, 5 br / 4.5 ba, neighborhood with fishing lake
- Primary bedroom w / vaulted ceilings
- Primary bath has soaking tub & large walk in closet
- Kitchen has large island, double ovens, tons of cabinets
- Quartz counters, keeping room
- Upstairs has large bedroom, bath, closet
- Oversized covered back porch w / fireplace
- Pam McGehee, The Chandler Group, (601) 460-9576
- \$898,900

18

**429 AURORA CIRCLE**  
GLENWILD**LAKE SHORE HOMES**

Hillary Reese • (601) 291-9285

- 2,085 sf, 4 br / 3 ba, gated community
- Family area w / fireplace, built in surround
- Dining room w / exposed brick wall
- Kitchen w / stainless appliances, quartz counters
- Primary suite w / formal office & built in desk
- All solid surface flooring
- Huge, covered patio
- Christi Chandler, The Chandler Group, (601) 201-4492
- \$415,000



LUXE HOMES

Jade Reese • (601) 454-0870

- 2,052 sf, 4 br / 3 ba, gated neighborhood
- Open split floor plan, office space, living area
- Chef's kitchen w/quartz counters, gas cooktop
- Wall oven, custom cabinetry
- Primary suite w/ spa-like bath, soaking tub
- Huge back porch
- Community pool & common area
- Melissa Reese, Prestige Realty & Investments, (601) 573-6317
- \$385,000



LAKESHORE HOMES

Hillary Reese • (601) 291-9285

- 1,953 sf, 4 br / 3 ba, gated community
- Open, split floor plan, office space
- Gourmet kitchen w / quartz counters
- Gas cooktop, wall oven, custom cabinetry
- Huge back porch
- Primary suite w / spa-like bath, huge laundry room
- Melissa Reese, Prestige Realty & Investments, (601) 573-6317
- \$389,000



**KENDRICK  
FENCE COMPANY**

**EXPERT  
FENCING  
SERVICES**

Whether it's for  
privacy, protection,  
or curb appeal,  
we've mastered the  
craft of delivering  
top-notch fencing!

Contact Us Today: 601-939-1446  
www.a1kendrick.com



Mortgage  
loans in  
your size.



You have homeownership  
dreams – we have loan options  
that may be just right for you.



**Hunter Lee**  
601-260-4631



**Riley Cooper**  
601-291-8262



Hancock Whitney Bank, Member  
FDIC and Equal Housing Lender. All  
loans and accounts subject to credit  
approval. Bank NMLS# 454781



21

441 AURORA CIRCLE  
GLENWILD

## LUXE HOMES

Jade Reese • (601) 454-0870

- 2,052 sf, 4 br / 3 ba, gated neighborhood
- Open split floor plan, office space, living area
- Chef's kitchen w / quartz counters, gas cooktop
- Wall oven, custom cabinetry
- Primary suite w / spa-like bath, soaking tub
- Huge back porch
- Community pool & common area
- Melissa Reese, Prestige Realty & Investments, (601) 573-6317
- \$408,000

22

449 AURORA CIRCLE  
GLENWILD

## LUXE HOMES

Jade Reese • (601) 454-0870

- 2,052 sf, 4 br / 3 ba, gated neighborhood
- Open split floor plan, office space, living area
- Chef's kitchen w / quartz counters, gas cooktop
- Wall oven, custom cabinetry
- Primary suite w / spa-like bath, soaking tub
- Huge back porch
- Community pool & common area
- Melissa Reese, Prestige Realty & Investments, (601) 573-6317
- \$408,000

Turn your house into your **dream home** with Viking Appliances from Southern Bath and Kitchen

4800 I-55, Jackson, MS 39211  
(601) 982-7176



SOUTHERN  
BATH & KITCHEN  
*Your dream. Your life. Welcome home.*  
A DIVISION OF SOUTHERN PIPE & SUPPLY CO., INC.



23

840 GLENWILD CIRCLE  
GLENWILD

## MURRAY HOME BUILDERS

Brett Murray • (601) 906-5626

- 2,100 sf, 4 br / 3 ba, one level, corner lot
- Large kitchen w / quartz counter, 5 burner gas cook top, built-in wall oven, glass front cabinets
- Modern built-in china cabinet w / floating shelves
- Walk-in pantry, office, built-in lockers
- Wood floors throughout
- Gas log fireplace
- Extra large patio w / tv connection
- Julie McNeely, Julie McNeely Properties, (601) 503-4924
- \$393,000

25

422 BAYLEIGH WAY  
GLENDALE FARMS

## FERGUSON BUILDERS, LLC

Mack Ferguson • (601) 317-1863

- 1,902 sf, 4 br / 2 ba, great layout, open floor plan
- Large walk-in pantry
- Wood flooring, quartz countertops
- Kitchen w / tons of storage, oversized island
- Stainless appliances, gas range, custom vent hood
- Cindy Johnston, Nix-Tann & Associates, (601) 982-7918, (601) 278-4689
- \$365,000

24

138 COVENTRY LANE  
COVENTRY

## LUXE HOMES

Jade Reese • (601) 454-0870

- 2,381 sf, 4 br / 3 ba, open floor plan
- Office, walk-in pantry, huge laundry room
- Premium finishes
- Gourmet kitchen w / double oven, gas range
- Outdoor kitchen
- Primary suite w / free-standing tub, hardwood, fireplace
- Melissa Reese, Prestige Realty & Investments, (601) 573-6317
- \$479,500

26

107 SOUTHERN OAK WAY  
WILD OAK OF OAKFIELD

## KIRKLAND DEVELOPMENT

Bruce Kirkland, CPB &amp; Chip Hutchison, CPB, (601) 982-7381

- 2,076 sf, 3 br / 3 ba, open, split plan
- All hard surface floors
- Tile shower in master, tile tub / shower in other baths
- Laundry room connected to master closet
- Kitchen w / 5 burner range, quiet dishwasher, microwave
- Foyer, office space
- Jill Hutchison, Kirkland Real Estate, (601) 720-9050;
- Baker Kirkland, Broker, Kirkland Real Estate (601) 982-7381
- \$399,900

27

**109 SOUTHERN OAK WAY**  
 WILD OAK OF OAKFIELD

**KIRKLAND DEVELOPMENT**

Bruce Kirkland, CPB &amp; Chip Hutchison, CPB, (601) 982-7381

- 2,012 sf, 3 br / 3 ba, open floor plan
- Private en-suite front bedroom
- Large island w / seating, walk in pantry
- Spacious primary retreat w / vaulted ceilings
- Covered patio w / fan & tv hook up
- Steve Houck, Real Estate Partners, (601) 942-2683
- \$389,900

28

**111 SOUTHERN OAK WAY**  
 OAKFIELD

**KIRKLAND DEVELOPMENT**

Bruce Kirkland, CPB &amp; Chip Hutchison, CPB, (601) 982-7381

- 2,027 sf, 3 br / 3 ba, split plan
- Kitchen island w/sink, fireplace in living
- Outdoor covered patio
- Walk in closets, 2 car garage w / extra storage
- Home office
- Nita Durrell, Durrell Realty Group, LLC, (601) 540-7959
- \$399,900

29

**113 SOUTHERN OAK WAY**  
 OAKFIELD

**KIRKLAND DEVELOPMENT**

Bruce Kirkland, CPB &amp; Chip Hutchison, CPB, (601) 982-7381

- 1,944 sf, 3 br / 3 ba, open concept design
- Fireplace in living, hardwood throughout
- Spacious walk in closets, large laundry room
- Contemporary finishes
- Community amenities w playground & pool
- Nita Durrell, Durrell Realty Group, LLC, (601) 540-7959
- \$379,000

30

**412 BUTTERNUT**  
 WOODSCAPE OF OAKFIELD

**KIRKLAND DEVELOPMENT**

Bruce Kirkland, CPB &amp; Chip Hutchison, CPB, (601) 982-7381

- 1,854 sf, 3 br / 3 ba, plus office
- Master bath w / double vanity
- All hard surface floors, no carpet
- Tankless water heater, extra insulation
- Lot backs up to green space
- All counters granite or quartz
- Jill Hutchison, Kirkland Real Estate, (601) 720-9050;
- Baker Kirkland, Broker, Kirkland Real Estate (601) 982-7381
- \$360,000

31

**416 BUTTERNUT DRIVE**  
 OAKFIELD

**KIRKLAND DEVELOPMENT**

Bruce Kirkland, CPB &amp; Chip Hutchison, CPB, (601) 982-7381

- 1,994 sf, 4 br / 3 ba, backs up to tree line
- Fresh color scheme, separate office
- All hard surface flooring
- Primary suite w / barrel-vault ceiling, 6 ft soaking tub
- White quartz counters in kitchen, large island w / seating
- Butler's pantry, 5 burner cooktop
- Charming front porch, covered back porch
- Steve Houck, Real Estate Partners, (601) 942-2683
- \$388,900

32

**410 BUTTERNUT DRIVE**  
 OAKFIELD

**KIRKLAND DEVELOPMENT**

Bruce Kirkland, CPB &amp; Chip Hutchison, CPB, (601) 982-7381

- 1,807 sf, 3 br / 3 ba, open floor plan
- Hard surface flooring throughout, no carpet
- Office space
- Covered back patio
- Primary suite w / tub, walk-in shower & double vanity
- Community amenities include pool & playground
- Nita Durrell, Durrell Realty Group, LLC, (601) 540-7959
- \$353,000

33

**400 PARKDALE PLACE**  
 ASHBY RIDGE OF OAKFIELD

**MS HOMES**

Nick Gullette • (601) 506-2502

- 2,056 sf, 4 br / 3 ba, corner lot
- Custom finishes
- Fireplace, tankless water heater
- Outdoor back porch
- Neighborhood amenities include pool & greenspace
- Tye Densford, Trifecta Real Estate, (601) 672-4001
- \$374,900



— BUILDING STRONG —  
**FOUNDATIONS SINCE 1927**

**601.353.8366**  
**www.mmcmaterials.com**





### 3S HOMES

Carl Sandberg • (601) 487-8232

- 2,070 sf, 4 br / 3 ba, private back yard
- Builder concessions of \$7,500 to buyer
- Office, plenty of storage
- Primary suite w / convenient laundry access
- Madison Crossing, Germantown school district
- Emily Sandberg, Front Gate Realty, (601) 573-8166
- \$387,500



### BOND PROPERTIES

Chris Bond, CPB, (601) 672-7582

- 2,023 sf, 3 br / 2.5 ba, 2 story
- Wood flooring
- Great neighborhood amenities:
  - Marina w / covered boat slips
  - General Store, Pool, Spa, Cocktail Bar
  - Green spaces, Playground area
- Covered front porch
- Elizabeth R. Smith, Nix-Tann & Associates, Inc., (601) 506-4608
- \$515,900

# Get \$1,000 Lender Credit

to use toward closing costs when you use a **Certified Professional Builder.**

**Let BankFirst help with closing costs.**

**Chris Smith**  
COMMERCIAL LENDER  
(769) 234-5678 | csmith@bankfirstfs.com  
NMLS# 1113539

**BANKFIRST**  
**Lending**

bankfirst.mortgage | NMLS# 454063

Member FDIC EQUAL HOUSING LENDER

36

123 WATER STREET  
TOWN OF LOST RABBIT

## WISEMAN HOME BUILDERS

Chris Wiseman • (601) 502-5168

- 2,794 sf, 4 br / 4 ba, 3 car garage, 2 story
- Butler's pantry w / wood counter
- Wood counter in laundry
- Drop zone w / hooks & cabinets
- Covered back patio with prep area & inset grill
- Neighborhood amenities include:
  - Marina w / boat slips, Pool & Spa
  - General Store, Cocktail Bar
- Katie Warren, Turn Key Properties, (601) 906-5956
- \$670,560

37

700 IVYWOOD COURT  
WESTLAKE

## TATE HOMES, LLC

Michael Tate

- 3,099 sf, 4 br / 3.5 ba, one level, 3 car garage
- Stunning architectural design
- Formal dining, expansive kitchen, keeping room
- Chef's dream kitchen
- European cabinets, quartz counters, Café SS appliances
- 6 burner gas cook-top, double ovens, microwave drawer
- Primary bedroom w / soaking tub, separate shower
- Rashida Walker, W Real Estate, LLC,  
(601) 573-1866, (601) 499-0952
- \$749,900

**Building More**

At First Commercial Bank, we're building more than dream homes. We're building relationships with our clients that will last a lifetime.

As trusted partners of our clients, both consumers and home builders, First Commercial provides a higher level of service our clients can count on for construction loans, mortgages, personal banking and more.

JACKSON • RIDGELAND • OXFORD • SOUTHAVEN • MEMPHIS

Bryan Nixie, Senior Managing Director  
Residential Construction Lending  
NMLS #2313977 and FCB Senior Mortgage Lending Specialist  
firstcommercialbk.com



601-354-3801 • [delta-ind.com](http://delta-ind.com)

*Supplier of Choice for Concrete and Aggregates Since 1945*

crushed concrete • gravel • mason sand  
limestone and more • delivery available

**DOORS, WINDOWS, MOULDINGS & ALL  
YOUR CUSTOM ARCHITECTURAL NEEDS**



# **HAMMITT**

---

## **CONTRACTORS MILLWORK**

**110 Jetport Drive • Pearl, MS 39208**

**Hours: Monday – Thursday 7am to 5pm • Friday 7am to 12pm**

**HAMMITTCM.COM | 601-932-8326**



# COWBOY'S KITCHENS

*by Cowboy Maloney's*  
[www.cowboyskitchens.com](http://www.cowboyskitchens.com)



C A F É

DISTINCT BY DESIGN™

**Cowboy Maloney's**  
**HOME STORE**  
APPLIANCES • FURNITURE • ELECTRONICS • BEDDING  
[www.cowboymaloney.com](http://www.cowboymaloney.com)

**RIVERWOOD**  
**APPLIANCE GALLERY**